

 Search[Start free trial](#)[Contact sales](#)[Pricing](#)[Elastic Cloud Serverless](#) ▼[Benefits](#)[FAQ](#)[Features](#) ▼

# Elastic Cloud managed service features

Elastic Cloud gives you the flexibility to run where you want. Deploy our managed service on Google Cloud, Microsoft Azure, or Amazon Web Services, and we'll handle the maintenance and upkeep for you.

[Standard](#)[Gold](#)[Platinum](#)[Enterprise](#)

	Q <sup>+</sup>			
Elasticsearch and Kibana	✓	✓	✓	✓
Deployment autoscaling	✓	✓	✓	✓
Same day version availability	✓	✓	✓	✓
Instant access to security patches	✓	✓	✓	✓
Single-click deployment upgrades	✓	✓	✓	✓
In-place configuration change	✓	✓	✓	✓
Deployment templates	✓	✓	✓	✓
Hot-warm-cold architecture, with	✓	✓	✓	✓



architecture, with automated index curation and searchable snapshots



Frozen data tier with automated index curation and searchable snapshots



Automated snapshots (configurable, default every 30 minutes)



REST API for deployment management



REST API support in ecctl CLI, Golang



	Q <sup>+</sup>			
Azure, Google Cloud	▼	▼	▼	▼
FedRAMP authorized at Moderate Impact level on AWS GovCloud (US) <sup>2</sup>	✓	✓	✓	✓
High availability across zones	✓	✓	✓	✓
Console signup with Google Account	✓	✓	✓	✓
Console signup with Microsoft Account	✓	✓	✓	✓
Multi-factor authentication	✓	✓	✓	✓
Multi-user management	✓	✓	✓	✓
Role-based access	✓	✓	✓	✓



AWS Marketplace  
billing integration



Microsoft Azure  
Marketplace billing  
integration



Google Cloud  
Marketplace billing  
integration



AWS PrivateLink  
integration



Azure Private Link  
integration



Google Cloud Private  
Service Connect  
integration



Encryption at rest





keys				
Encryption at rest with GCP KMS keys				✓
IP filtering	✓	✓	✓	✓
SOC 2 and CSA Star 2 compliance	✓	✓	✓	✓
HIPAA BAA ready	✓	✓	✓	✓
ISO 27001/27017/27018	✓	✓	✓	✓

MONITORING & DIAGNOSTICS

AutoOps

Real-time root cause analysis and	✓	✓	✓	✓
-----------------------------------	---	---	---	---

	Q <sup>+</sup>			
performance and stability	▼	▼	▼	▼
Resource utilization visibility	✓	✓	✓	✓
Default data retention	✓	✓	✓	✓
Notifications to alerting and messaging frameworks (Slack, MS teams, PD, custom webhooks, and more)	✓	✓	✓	✓
Customization of events	✓	✓	✓	✓
Stack monitoring				
Full-stack monitoring (including Beats and	✓	✓	✓	✓



	Cloud	Cloud Enterprise	Cloud Enterprise with ML	Cloud Enterprise with ML and Guardrails
Configurable retention policy	✓	✓	✓	✓
Kibana alerting and actions <sup>4</sup>	✓	✓	✓	✓
Automatic stack issue alerts	✓	✓	✓	✓



## ELASTIC STACK OPERATIONS & MANAGEMENT

### Storage types

Inverted index (for search)	✓	✓	✓	✓
Evaluating calculated fields at index time	✓	✓	✓	✓
Runtime fields	✓	✓	✓	✓





	Q <sup>+</sup>			
Document store (for unstructured)	✓	✓	✓	✓
Columnar store (for analytics)	✓	✓	✓	✓
Doc-values only fields	✓	✓	✓	✓
BKD trees (for numeric, dates, geo)	✓	✓	✓	✓
Flattened field type	✓	✓	✓	✓
Histogram field type	✓	✓	✓	✓
Match only text field type		✓	✓	✓
Shape field type	✓	✓	✓	✓
Vector field type	✓	✓	✓	✓



Synthetic _source	13	13	13	✓
-------------------	----	----	----	---

**Data management**

Searchable snapshots				✓
Snapshot/restore APIs	✓	✓	✓	✓
Snapshot as simple archives	✓	✓	✓	✓
Snapshot lifecycle management	✓	✓	✓	✓
Snapshot-based peer recoveries	✓	✓	✓	✓
Data rollups	✓	✓	✓	✓



Data transforms	✓	✓	✓	✓
Index lifecycle management	✓	✓	✓	✓
Data stream lifecycle	✓	✓	✓	✓
Downsampling lifecycle	✓	✓	✓	✓

Stack management

Data import tutorials	✓	✓	✓	✓
Ingest Node Pipeline Builder UI	✓	✓	✓	✓
Grok Debugger	✓	✓	✓	✓
Upgrade Assistant	✓	✓	✓	✓



Scalability & resiliency

Clustering and high availability	✓	✓	✓	✓
Cluster rebalancing	✓	✓	✓	✓
Advanced cluster rebalancing <sup>11</sup>	✓	✓	✓	✓
Cross-region cross-cluster replication				✓
Same-region cross-cluster replication			✓	✓
Cross-environment cross-cluster replication				✓
Cross-region cross-cluster search				✓

Q\*

model / _search only)				
Cross-environment cross-cluster search				✓
Dedicated master nodes	✓	✓	✓	✓
Dedicated coordinating nodes	✓	✓	✓	✓

Elastic Stack security

Secure settings	✓	✓	✓	✓
Data encryption at rest	✓	✓	✓	✓
Encrypted node-to-node communications	✓	✓	✓	✓

Q<sup>+</sup>

Anonymous access control (public sharing)	✓	✓	✓	✓
Native authentication	✓	✓	✓	✓
Kibana Spaces	✓	✓	✓	✓
Kibana feature controls	✓	✓	✓	✓
Kibana subfeature privileges <sup>8</sup>			✓	✓
Prelogin access agreement			✓	✓
API Keys management	✓	✓	✓	✓
Elasticsearch Token Service	✓	✓	✓	✓



Attribute-based access control			✓	✓
Field- and document-level security			✓	✓
Advanced security for remote clusters				✓
Custom authentication and authorization realms			✓	✓

Alerting

Noise reduction capabilities (e.g., Scheduled Snooze, Muting, Deduping, etc.)	✓	✓	✓	✓
---	---	---	---	---

Q<sup>+</sup>

Tracking containment rule type (geofencing)		✓	✓	✓
Anomaly detection rule types by Machine Learning			✓	✓
Operational rule type for transforms	✓	✓	✓	✓
Search threshold rule types for Discover	✓	✓	✓	✓
Case Management	✓	✓	✓	✓
Case user assignment			✓	✓
Elastic Connectors (e.g., Server Log and Index)	✓	✓	✓	✓



		Q <sup>+</sup>		
PagerDuty, Slack, IBM Resilient, ServiceNow®, Tines, Torq)		✓	✓	✓
Watcher	✓	✓	✓	✓

Clients

REST APIs	✓	✓	✓	✓
Language clients	✓	✓	✓	✓
Query DSL	✓	✓	✓	✓
Console	✓	✓	✓	✓
JDBC client			✓	✓
ODBC client			✓	✓
Tableau Connector			✓	✓

Q <sup>+</sup>				
Chinese (Simplified)	✓	✓	✓	✓
French	✓	✓	✓	✓
Japanese	✓	✓	✓	✓
Custom plugins				
Custom plugins		✓	✓	✓
SEARCH & ANALYSIS				
Full-text search				
Relevance scoring	✓	✓	✓	✓
Highlighting	✓	✓	✓	✓
Type ahead	✓	✓	✓	✓

	Q <sup>+</sup>			
Percolations	✓	✓	✓	✓
Async search	✓	✓	✓	✓
Results pinning	✓	✓	✓	✓
Query profiler	✓	✓	✓	✓
Dynamically updateable synonyms	✓	✓	✓	✓
Similarity functions for vector fields	✓	✓	✓	✓
Vector search	✓	✓	✓	✓
Reciprocal Rank Fusion (RRF) for hybrid search				✓

Q<sup>+</sup>

Query Rules				✓
Learning to Rank				✓
Retrievers	✓	✓	✓	✓
Rank Vectors (for MaxSim)			✓	

Analytics

Aggregations	✓	✓	✓	✓
Boxplot aggregation	✓	✓	✓	✓
Cumulative cardinality aggregation	✓	✓	✓	✓
Geoline aggregation		✓	✓	✓
Geoshape		✓	✓	✓



Geogrid query



Moving percentiles aggregation



Multi terms aggregation



Normalize aggregation



Range aggregation over histogram fields



Random sampler aggregation



Rate aggregation



Significant terms aggregation p-value score



Q<sup>+</sup>

Top metrics aggregation	✓	✓	✓	✓
T-test aggregation	✓	✓	✓	✓
Graph exploration			✓	✓
Vector tiles API	✓	✓	✓	✓

Query languages

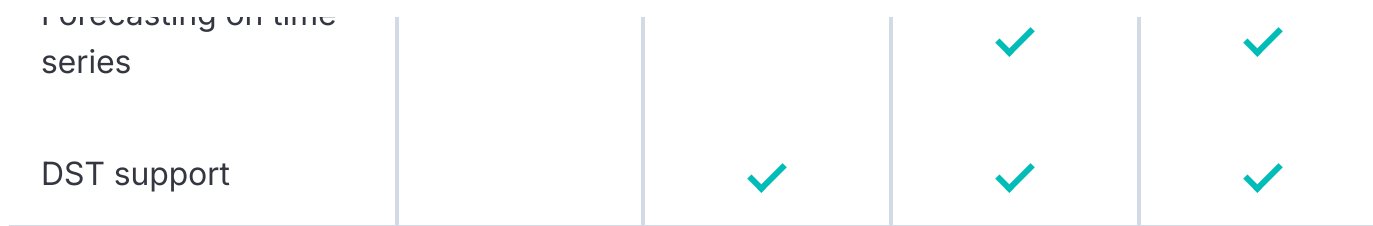
Elasticsearch SQL APIs	✓	✓	✓	✓
Event Query Language (EQL)	✓	✓	✓	✓
ES QL (Elasticsearch Query Language)	✓	✓	✓	✓
Cross-cluster ES QL - Tech Preview				✓



Data Visualizer	✓	✓	✓	✓
File upload wizard	✓	✓	✓	✓
Data drift			✓	✓
Dashboard embeddables		✓	✓	

Anomaly detection

Single metric and multi-metric			✓	✓
Population/entity analysis			✓	✓
Log message categorization			✓	✓
Rare analysis			✓	✓



Outlier detection			✓	✓
Regression			✓	✓
Classification			✓	✓
Feature importance			✓	✓

Language identification	✓	✓	✓	✓
Third party model management, for ML			✓	✓





Elastic Learned  
Sparse Encoder  
(ELSER) - packaged  
for ML nodes



e5 - packaged for  
ML nodes



Elastic Rerank



Inference API -  
Elastic managed  
(ELSER, e5, Elastic  
Rerank)



Inference API -  
support for third  
party and self  
managed  
embeddings,  
reranking and LLM  
providers



Q <sup>+</sup>				
spikes			▼	▼
Log Pattern Analysis			✓	✓
Change Point Detection			✓	✓
ELASTICSEARCH				
Search server	✓	✓	✓	✓
Search management UI	✓	✓	✓	✓
Search stack monitoring	✓	✓	✓	✓
Dashboards for web and search analytics	✓	✓	✓	✓
Dev Console	✓	✓	✓	✓



Content management UI	✓	✓	✓	✓
Ingestion pipeline management	✓	✓	✓	✓
Inference processor management			✓	✓
Extraction Service (Beta)			✓	✓

Machine Learning / AI

Third party model management			✓	✓
Elastic Learned Sparse Encoder (ELSER) - packaged for ML nodes			✓	✓

Q<sup>+</sup>

Elastic Rerank				✓
Inference API - Elastic managed (ELSER, e5 and Elastic Rerank)				✓
Inference API - support for third party and self managed embeddings, reranking and LLM providers				✓
Playground				✓

Query and relevance

Search Applications			✓	✓
Elasticsearch query DSL	✓	✓	✓	✓

	Q <sup>+</sup>			
Language specific relevance	✓	✓	✓	✓
Vector search	✓	✓	✓	✓
Similarity functions for vector fields	✓	✓	✓	✓
Reciprocal Rank Fusion (RRF) for hybrid search				✓
Synonym management	✓	✓	✓	✓
Query Rules				✓
Learning to Rank (LTR)				✓
Search Applications (beta)				✓

Q\*

(open source)	▼	▼	▼	▼
Search UI (open source)	✓	✓	✓	✓
AI ecosystem client integrations (open source)	✓	✓	✓	✓
Web and search analytics client (Beta)	✓	✓	✓	✓

Security

Encrypted communications	✓	✓	✓	✓
Role-based access control	✓	✓	✓	✓
Single sign-on (SAML, OpenID			✓	✓



support



DATA INGEST & TRANSFORMATION

Ingest products & features

Filebeat, Metricbeat, Winlogbeat, Packetbeat <sup>10</sup> , Heartbeat, Auditbeat, real browser-based synthetic monitoring agent (Beta)	✓	✓	✓	✓
Functionbeat	✓	✓	✓	✓
Logstash	✓	✓	✓	✓
ES-Hadoop	✓	✓	✓	✓
File import wizard	✓	✓	✓	✓



**fleet**

Fleet Server	✓	✓	✓	✓
Fleet app	✓	✓	✓	✓
Fleet integrations	✓	✓	✓	✓
Elastic Agent	✓	✓	✓	✓
Selective agent binary updates	✓	✓	✓	✓
Scheduled agent binary upgrades		✓	✓	✓
Selective agent policy reassignment	✓	✓	✓	✓
Selective agent unenrollment	✓	✓	✓	✓





Integration output assignment				✓
Reusable Integration policies				✓

**Data sources - For a full list of integrations available, check out our [Integrations page](#).**

Abuse.ch	✓	✓	✓	✓
Audit system data	✓	✓	✓	✓
Cisco Firepower	✓	✓	✓	✓
Check Point Firewall	✓	✓	✓	✓
Cloudflare	✓	✓	✓	✓
CrowdStrike Falcon	✓	✓	✓	✓
Fortinet Fortigate	✓	✓	✓	✓

Q<sup>+</sup>

Google Workspace	✓	✓	✓	✓
Microsoft 365 Defender & Defender for Endpoint	✓	✓	✓	✓
Microsoft (Office) 365	✓	✓	✓	✓
Network Packet Capture	✓	✓	✓	✓
NetFlow and IPFIX	✓	✓	✓	✓
Okta	✓	✓	✓	✓
Palo Alto Networks Cortex XDR	✓	✓	✓	✓
Palo Alto Networks Firewalls	✓	✓	✓	✓
SentinelOne	✓	✓	✓	✓



Data transformation

Index time enrichment	✓	✓	✓	✓
Processors	✓	✓	✓	✓
Analyzers	✓	✓	✓	✓
Tokenizers	✓	✓	✓	✓
Filters	✓	✓	✓	✓
Filter on ANN - vector Search	✓	✓	✓	✓
Grok	✓	✓	✓	✓
Field transformation	✓	✓	✓	✓
External lookup	✓	✓	✓	✓

Q<sup>+</sup>

Match and geo-match enrich processor <sup>9</sup>	✓	✓	✓	✓
Support for MaxMind commercial databases				✓
Support for IPinfo commercial databases				✓
Redact ingest processor			✓	✓

Elastic Common Schema

Elastic Common Schema	✓	✓	✓	✓
-----------------------	---	---	---	---

Content Integrations<sup>14</sup>

Q\*

Connector Framework	✓	✓	✓	✓
Connector API	✓	✓	✓	✓
Elastic Azure Blob Storage connector	✓	✓	✓	✓
Elastic Box connector	✓	✓	✓	✓
Elastic Confluence Cloud & Server connector	✓	✓	✓	✓
Elastic Confluence Data Center connector	✓	✓	✓	✓
Elastic Dropbox connector	✓	✓	✓	✓
Elastic GitHub & GitHub Enterprise	✓	✓	✓	✓



- Elastic Google Cloud Storage connector
- Elastic Google Drive connector
- Elastic GraphQL connector
- Elastic Jira Cloud & Server connector
- Elastic Jira Data Center connector
- Elastic MongoDB connector
- Elastic Microsoft SQL connector



Q\*

Elastic Network Drive connector	✓	✓	✓	✓
Elastic Notion connector	✓	✓	✓	✓
Elastic OneDrive connector	✓	✓	✓	✓
Elastic Oracle connector	✓	✓	✓	✓
Elastic Outlook connector	✓	✓	✓	✓
Elastic PostgreSQL connector	✓	✓	✓	✓
Elastic Redis connector	✓	✓	✓	✓
Elastic S3 connector	✓	✓	✓	✓

Q\*

Elastic ServiceNow connector	✓	✓	✓	✓
Elastic SharePoint Online connector	✓	✓	✓	✓
Elastic SharePoint Server connector	✓	✓	✓	✓
Elastic Slack connector	✓	✓	✓	✓
Elastic Teams connector	✓	✓	✓	✓
Elastic Zoom connector	✓	✓	✓	✓

DATA EXPLORATION & VISUALIZATION

Visualizations



	Q <sup>+</sup>			
Metrics	✓	✓	✓	✓
Tables	✓	✓	✓	✓
Tag cloud	✓	✓	✓	✓
Custom (Vega)	✓	✓	✓	✓
Lens	✓	✓	✓	✓

Data exploration

ES QL (Elasticsearch Query Language)	✓	✓	✓	✓
Dashboards	✓	✓	✓	✓
Drilldown between dashboards	✓	✓	✓	✓
Drilldown to URL		✓	✓	✓

	Q <sup>+</sup>			
Console	✓	✓	✓	✓
Kibana query autocomplete	✓	✓	✓	✓
Kibana runtime fields editor	✓	✓	✓	✓
Run search sessions in background	✓	✓	✓	✓
Graph analytics			✓	✓
Data views	✓	✓	✓	✓
Share & collaborate				
Embeddable dashboards	✓	✓	✓	✓
Anonymous access control (public	✓	✓	✓	✓

Q <sup>+</sup>				
PDF and PNG reports		✓	✓	✓
Saved queries	✓	✓	✓	✓
Content management				
Kibana Spaces	✓	✓	✓	✓
Custom banners		✓	✓	✓
Object export UI & APIs	✓	✓	✓	✓
Tags	✓	✓	✓	✓
Navigational search	✓	✓	✓	✓
ELASTIC OBSERVABILITY				
Observability	✓	✓	✓	✓

Q <sup>+</sup>				
Curated ad hoc data exploration	✓	✓	✓	✓
Service Level Objectives (SLOs)			✓	✓
Kibana alerting and actions <sup>4</sup>	✓	✓	✓	✓
Universal Profiling	✓	✓	✓	✓
Elastic AI Assistant				✓
LLM Observability	✓	✓	✓	✓
ELASTIC APM <sup>3</sup>				
Elastic APM				
APM server	✓	✓	✓	✓

Q<sup>+</sup>

Intake for traces and metrics <sup>6</sup>	✓	✓	✓	✓
APM app	✓	✓	✓	✓
Distributed tracing	✓	✓	✓	✓
Service maps			✓	✓
Correlations			✓	✓
Synthetic _source for APM indices	13	13	13	✓
LLM tracing	✓	✓	✓	✓

**APM language support**

Java	✓	✓	✓	✓
.NET	✓	✓	✓	✓



RUM (JavaScript)	✓	✓	✓	✓
PHP	✓	✓	✓	✓
Python	✓	✓	✓	✓
Node	✓	✓	✓	✓

Stack integrations

Elastic Logs and Metrics	✓	✓	✓	✓
Kibana alerting and actions <sup>4</sup>	✓	✓	✓	✓
Machine learning			✓	✓
Synthetic _source for Profiling indices	13	13	13	✓

	Q <sup>+</sup>			
(Freebeat)				
Dashboards for common data sources	✓	✓	✓	✓
Logs app	✓	✓	✓	✓
Logsdbs indices for logs	✓	✓	✓	✓
Synthetic _source for logsdbs indices	13	13	13	✓
Custom routing on sort fields for logsdbs				✓
Integrations				
Elastic Uptime and APM	✓	✓	✓	✓

Q <sup>+</sup>				
Log categorization			✓	✓
Machine learning			✓	✓
ELASTIC METRICS				
Metric shipper (Metricbeat)	✓	✓	✓	✓
Dashboards for common data sources	✓	✓	✓	✓
Metrics app	✓	✓	✓	✓
Time series indices for metrics (TSDS)	✓	✓	✓	✓
Synthetic _source for time series indices	13	13	13	✓
Downsampling	✓	✓	✓	✓



Q\*

Synthetic Monitoring Private Locations	✓	✓	✓	✓
Kibana alerting and actions <sup>4</sup>	✓	✓	✓	✓
Machine learning			✓	✓

ELASTIC SYNTHETIC MONITORING


Synthetic Monitoring UI	✓	✓	✓	✓
Project Monitors	✓	✓	✓	✓
Managed Test Execution Service <sup>12</sup>	✓	✓	✓	✓
Private Testing Locations	✓	✓	✓	✓



ELASTIC SECURITY				
Elastic Common Schema	✓	✓	✓	✓
Extended detection & response (XDR)	✓	✓	✓	✓
Security information and event management (SIEM)	✓	✓	✓	✓
Host security analysis	✓	✓	✓	✓
Network security analysis	✓	✓	✓	✓
User security analysis	✓	✓	✓	✓
Timeline event	✓	✓	✓	✓

Q\*

Detection engine (e.g., correlation, indicator match, threshold)	✓	✓	✓	✓
Prebuilt detection rules	✓	✓	✓	✓
Detection alerts suppression			✓	✓
Detection alert external actions		✓	✓	✓
Machine learning anomaly detection			✓	✓
Prebuilt anomaly detection jobs			✓	✓
Malware prevention	✓	✓	✓	✓

				
ransomware prevention			✓	✓
Malicious behavior protection			✓	✓
Memory threat protection			✓	✓
Self-healing			✓	✓
Host Isolation			✓	✓
Interactive response console				✓
Tamper Protection		✓	✓	✓
Elastic AI Assistant				✓
Threat intelligence management				✓

Q<sup>+</sup>

Customizable on endpoint protection notifications			✓	✓
Cloud and Kubernetes Security Posture Management (K/CSPM)	✓	✓	✓	✓
Workload session auditing				✓

Integrations

Elastic Agent	✓	✓	✓	✓
Elastic APM	✓	✓	✓	✓
IPinfo Commercial Database			✓	
Elastic Maps	✓	✓	✓	✓

Q\*

Capture				
Threat intelligence feeds and platforms	✓	✓	✓	✓
Machine learning			✓	✓
Kibana Alerts and Actions <sup>4</sup>	✓	✓	✓	✓
Atlassian Jira		✓	✓	✓
Swimlane SOAR		✓	✓	✓
IBM Resilient			✓	✓
ServiceNow ITOM, ITSM, SecOps			✓	✓
Generative AI Connector for Open AI, Azure Open AI,				✓



ELASTIC MAPS

Elastic Maps Service <sup>5</sup>				
Base layer maps	✓	✓	✓	✓
Maps app				
Shapefile and GeoJSON upload	✓	✓	✓	✓
Multiple layers	✓	✓	✓	✓
Native vector tile support	✓	✓	✓	✓
Layer-based filtering	✓	✓	✓	✓
Client-side styling	✓	✓	✓	✓
Individual points and	✓	✓	✓	✓

				
Containment alerts		✓	✓	✓
Embed maps in dashboard	✓	✓	✓	✓
Embed maps in Canvas	✓	✓	✓	✓
Geo-threshold alerts		✓	✓	✓
Display up to 24 zoom levels	✓	✓	✓	✓
Custom raster and vector tile service support	✓	✓	✓	✓
Kibana Alerts: tracking containment (geofencing)		✓	✓	✓





Support coverage		Business hours	24/7/365	24/7/365
Target initial response time		Urgent: 4 business hours High: 1 business day Normal: 2 business days	Urgent: 1 hour High: 4 hours Normal: 1 business day	Urgent: 30 minutes High: 4 hours Normal: 1 business day
Unlimited # of incidents		✓	✓	✓
Support contacts <sup>7</sup>	2	6	8	8
Ticket-based support	✓	✓	✓	✓
SLA-based support		✓	✓	✓



<sup>4</sup> Refer to the Alerting section (Kibana Alerts and Kibana Actions items) for further details. Alerting rules based on anomaly detection or SLOs are only available on Platinum and Enterprise tiers.

<sup>5</sup> [Elastic Maps Service - Terms of Service](#)

<sup>6</sup> There are two options for OpenTelemetry intake: native support of the OpenTelemetry protocol directly into APM Server (experimental), and the Elastic exporter on the OpenTelemetry collector, which is the recommended approach. If you choose the latter, note that Elastic Cloud does not host the Elastic exporter on the OpenTelemetry collector exporter, refer to [documentation](#) to set one up adjacent to your applications.

<sup>7</sup> Elastic Certified Professionals can be added as additional Support contacts on paid subscriptions at no additional charge.

<sup>8</sup> Access to administering Kibana subfeature privileges start at the Gold tier and are available on a per-feature basis matching the feature's subscriptions tier.

<sup>9</sup> [Elastic GeolP Database Service Agreement](#)

<sup>10</sup> Re-distributing the Windows release of Packetbeat and the Network Packet Capture agent integration for Windows hosts requires an additional license to npcap, a Windows packet sniffing library, that may be obtained from [nmap.org](#).

<sup>11</sup> Advanced cluster rebalancing is based on observed data stream write loads described in cluster-level shard allocation.

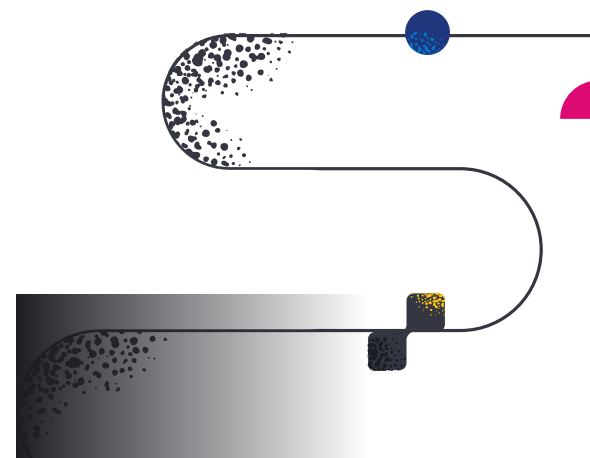
<sup>12</sup> Access to the synthetic monitoring managed testing infrastructure is limited to Elastic Cloud users only or users consuming Elastic Cloud through a CSP marketplace. Test runs executed on the managed testing infrastructure incur an additional cost.

<sup>13</sup> Synthetic \_source is an Enterprise feature from 8.17 onward.



*The list above reflects the features available in the latest version of the Elastic Stack. Any features or functions of services or products referenced on this page or other pages, or in any presentations, press releases or public statements, which are not currently available or not currently available as a GA release, may not be delivered on time or at all. The development, release, and timing of any features or functionality described for our products remains at our sole discretion. Customers who purchase our products and services should make the purchase decisions based upon services and product features and functions that are currently available.*

[Download PDF Version](#) or [Previous Versions Available Here](#)





FOLLOW US



ABOUT US

- About Elastic
- Leadership
- Blog
- Newsroom

JOIN US

PARTNERS

- Find a partner
- Partner login
- Request access
- Become a partner

TRUST & SECURITY

INVESTOR RELATIONS

- Investor resources
- Governance
- Financials
- Stock

EXCELLENCE AWARDS

♦ **New** The executive guide to generative AI [Read more](#)

[About us](#) [Partners](#) [Support](#)

[Login](#)



[Trademarks](#) [Terms of Use](#) [Privacy](#) [Sitemap](#)

© 2025. Elasticsearch B.V. All Rights Reserved

Elastic, Elasticsearch and other related marks are trademarks, logos or registered trademarks of Elasticsearch B.V. in the United States and other countries.

Apache, Apache Lucene, Apache Hadoop, Hadoop, HDFS and the yellow elephant logo are trademarks of the [Apache Software Foundation](#) in the United States and/or other countries. All other brand names, product names, or trademarks belong to their respective owners.